

Classroom
Edition

BRAIN TRAINING WITH ... THE NEW NUMBER CRUNCHERS

by Barry Clayton

LEVEL 1: ADDING

One Calculation - End Answers Only

(BASIC NUMBER FACTS)

I'm loving
this stuff!!



Robit McCruncher®

www.robitmccruncher.co.nz



**BRAINTOOLS FOR
BRAIN TRAINING**

**ALL AGES,
ALL STAGES**

I'm loving
this stuff!!



THE NEW NUMBER CRUNCHERS

BASIC NUMBER FACTS

LEVEL 1: ADDING-End answers only

LEVEL 1
SET 1

LIST A

1. $2+9 = \square$
2. $8+7 = \square$
3. $5+2 = \square$
4. $10+4 = \square$
5. $4+4 = \square$
6. $7+5 = \square$
7. $0+9 = \square$
8. $8+9 = \square$
9. $6+3 = \square$
10. $6+0 = \square$
11. $1+4 = \square$
12. $3+3 = \square$
13. $0+0 = \square$
14. $9+4 = \square$
15. $6+10 = \square$
16. $5+0 = \square$
17. $9+5 = \square$
18. $4+5 = \square$
19. $2+2 = \square$
20. $7+1 = \square$

LIST B

1. $10+6 = \square$
2. $1+8 = \square$
3. $9+10 = \square$
4. $6+4 = \square$
5. $7+0 = \square$
6. $3+7 = \square$
7. $1+1 = \square$
8. $9+7 = \square$
9. $3+0 = \square$
10. $10+1 = \square$
11. $3+4 = \square$
12. $6+6 = \square$
13. $4+1 = \square$
14. $9+8 = \square$
15. $0+1 = \square$
16. $5+4 = \square$
17. $6+8 = \square$
18. $2+6 = \square$
19. $4+9 = \square$
20. $2+3 = \square$

LIST C

1. $3+2 = \square$
2. $7+10 = \square$
3. $6+2 = \square$
4. $7+3 = \square$
5. $10+8 = \square$
6. $5+9 = \square$
7. $0+7 = \square$
8. $7+8 = \square$
9. $6+9 = \square$
10. $1+2 = \square$
11. $4+10 = \square$
12. $2+0 = \square$
13. $8+6 = \square$
14. $4+3 = \square$
15. $1+5 = \square$
16. $9+2 = \square$
17. $4+6 = \square$
18. $8+1 = \square$
19. $7+7 = \square$
20. $10+5 = \square$

LIST D

1. $4+7 = \square$
2. $1+9 = \square$
3. $5+7 = \square$
4. $8+2 = \square$
5. $7+9 = \square$
6. $2+1 = \square$
7. $0+4 = \square$
8. $8+0 = \square$
9. $6+9 = \square$
10. $10+3 = \square$
11. $5+1 = \square$
12. $3+5 = \square$
13. $2+7 = \square$
14. $0+3 = \square$
15. $1+6 = \square$
16. $10+9 = \square$
17. $3+8 = \square$
18. $8+4 = \square$
19. $2+4 = \square$
20. $8+5 = \square$

LIST E

1. $8+3 = \square$
2. $7+2 = \square$
3. $3+10 = \square$
4. $0+2 = \square$
5. $1+3 = \square$
6. $7+3 = \square$
7. $8+10 = \square$
8. $3+9 = \square$
9. $0+8 = \square$
10. $5+8 = \square$
11. $2+10 = \square$
12. $4+0 = \square$
13. $5+5 = \square$
14. $6+1 = \square$
15. $5+3 = \square$
16. $10+7 = \square$
17. $8+8 = \square$
18. $4+2 = \square$
19. $9+1 = \square$
20. $6+5 = \square$

LIST F

1. $1+10 = \square$
2. $5+6 = \square$
3. $9+6 = \square$
4. $10+2 = \square$
5. $7+4 = \square$
6. $1+0 = \square$
7. $10+0 = \square$
8. $5+8 = \square$
9. $9+9 = \square$
10. $3+1 = \square$
11. $1+7 = \square$
12. $3+6 = \square$
13. $10+10 = \square$
14. $0+5 = \square$
15. $4+8 = \square$
16. $5+10 = \square$
17. $2+8 = \square$
18. $9+3 = \square$
19. $7+6 = \square$
20. $2+5 = \square$



PUBLISHED IN NEW ZEALAND BY
THE OUTER EDGE LTD

© Copyright 2010 Barry Clayton

www.robitmccruncher.co.nz

I'm loving
this stuff!!



THE NEW NUMBER CRUNCHERS

BASIC NUMBER FACTS

LEVEL 1: ADDING-End answers only

LEVEL 1
SET 2

LIST A

1. $1+4 = \square$
2. $3+3 = \square$
3. $0+0 = \square$
4. $9+4 = \square$
5. $6+10 = \square$
6. $2+9 = \square$
7. $8+7 = \square$
8. $5+2 = \square$
9. $10+4 = \square$
10. $4+4 = \square$
11. $5+0 = \square$
12. $9+5 = \square$
13. $4+5 = \square$
14. $2+2 = \square$
15. $7+1 = \square$
16. $7+5 = \square$
17. $0+9 = \square$
18. $8+9 = \square$
19. $6+3 = \square$
20. $6+0 = \square$

LIST B

1. $3+4 = \square$
2. $6+6 = \square$
3. $4+1 = \square$
4. $9+8 = \square$
5. $0+1 = \square$
6. $10+6 = \square$
7. $1+8 = \square$
8. $9+10 = \square$
9. $6+4 = \square$
10. $7+0 = \square$
11. $5+4 = \square$
12. $6+8 = \square$
13. $2+6 = \square$
14. $4+9 = \square$
15. $2+3 = \square$
16. $3+7 = \square$
17. $1+1 = \square$
18. $9+7 = \square$
19. $3+0 = \square$
20. $10+1 = \square$

LIST C

1. $4+10 = \square$
2. $2+0 = \square$
3. $8+6 = \square$
4. $4+3 = \square$
5. $1+5 = \square$
6. $3+2 = \square$
7. $7+10 = \square$
8. $6+2 = \square$
9. $7+3 = \square$
10. $10+8 = \square$
11. $9+2 = \square$
12. $4+6 = \square$
13. $8+1 = \square$
14. $7+7 = \square$
15. $10+5 = \square$
16. $5+9 = \square$
17. $0+7 = \square$
18. $7+8 = \square$
19. $6+9 = \square$
20. $1+2 = \square$

LIST D

1. $5+1 = \square$
2. $3+5 = \square$
3. $2+7 = \square$
4. $0+3 = \square$
5. $1+6 = \square$
6. $4+7 = \square$
7. $1+9 = \square$
8. $5+7 = \square$
9. $8+2 = \square$
10. $7+9 = \square$
11. $10+9 = \square$
12. $3+8 = \square$
13. $8+4 = \square$
14. $2+4 = \square$
15. $8+5 = \square$
16. $2+1 = \square$
17. $0+4 = \square$
18. $8+0 = \square$
19. $6+9 = \square$
20. $10+3 = \square$

LIST E

1. $2+10 = \square$
2. $4+0 = \square$
3. $5+5 = \square$
4. $6+1 = \square$
5. $5+3 = \square$
6. $8+3 = \square$
7. $7+2 = \square$
8. $3+10 = \square$
9. $0+2 = \square$
10. $1+3 = \square$
11. $10+7 = \square$
12. $8+8 = \square$
13. $4+2 = \square$
14. $9+1 = \square$
15. $6+5 = \square$
16. $7+3 = \square$
17. $8+10 = \square$
18. $3+9 = \square$
19. $0+8 = \square$
20. $5+8 = \square$

LIST F

1. $1+7 = \square$
2. $3+6 = \square$
3. $10+10 = \square$
4. $0+5 = \square$
5. $4+8 = \square$
6. $1+10 = \square$
7. $5+6 = \square$
8. $9+6 = \square$
9. $10+2 = \square$
10. $7+4 = \square$
11. $5+10 = \square$
12. $2+8 = \square$
13. $9+3 = \square$
14. $7+6 = \square$
15. $2+5 = \square$
16. $1+0 = \square$
17. $10+0 = \square$
18. $5+8 = \square$
19. $9+9 = \square$
20. $3+1 = \square$

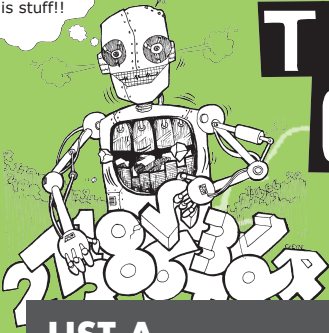


PUBLISHED IN NEW ZEALAND BY
THE OUTER EDGE LTD

© Copyright 2010 Barry Clayton

www.robitmccruncher.co.nz

I'm loving
this stuff!!



THE NEW NUMBER CRUNCHERS

BASIC NUMBER FACTS

LEVEL 1: ADDING-End answers only

LEVEL 1
SET 3

LIST A

1. $7+5 = \square$
2. $0+9 = \square$
3. $8+9 = \square$
4. $6+3 = \square$
5. $6+0 = \square$
6. $1+4 = \square$
7. $3+3 = \square$
8. $0+0 = \square$
9. $9+4 = \square$
10. $6+10 = \square$
11. $2+9 = \square$
12. $8+7 = \square$
13. $5+2 = \square$
14. $10+4 = \square$
15. $4+4 = \square$
16. $5+0 = \square$
17. $9+5 = \square$
18. $4+5 = \square$
19. $2+2 = \square$
20. $7+1 = \square$

LIST B

1. $3+7 = \square$
2. $1+1 = \square$
3. $9+7 = \square$
4. $3+0 = \square$
5. $10+1 = \square$
6. $3+4 = \square$
7. $6+6 = \square$
8. $4+1 = \square$
9. $9+8 = \square$
10. $0+1 = \square$
11. $10+6 = \square$
12. $1+8 = \square$
13. $9+10 = \square$
14. $6+4 = \square$
15. $7+0 = \square$
16. $5+4 = \square$
17. $6+8 = \square$
18. $2+6 = \square$
19. $4+9 = \square$
20. $2+3 = \square$

LIST C

1. $5+9 = \square$
2. $0+7 = \square$
3. $7+8 = \square$
4. $6+9 = \square$
5. $1+2 = \square$
6. $4+10 = \square$
7. $2+0 = \square$
8. $8+6 = \square$
9. $4+3 = \square$
10. $1+5 = \square$
11. $3+2 = \square$
12. $7+10 = \square$
13. $6+2 = \square$
14. $7+3 = \square$
15. $10+8 = \square$
16. $9+2 = \square$
17. $4+6 = \square$
18. $8+1 = \square$
19. $7+7 = \square$
20. $10+5 = \square$

LIST D

1. $2+1 = \square$
2. $0+4 = \square$
3. $8+0 = \square$
4. $6+9 = \square$
5. $10+3 = \square$
6. $5+1 = \square$
7. $3+5 = \square$
8. $2+7 = \square$
9. $0+3 = \square$
10. $1+6 = \square$
11. $4+7 = \square$
12. $1+9 = \square$
13. $5+7 = \square$
14. $8+2 = \square$
15. $7+9 = \square$
16. $10+9 = \square$
17. $3+8 = \square$
18. $8+4 = \square$
19. $2+4 = \square$
20. $8+5 = \square$

LIST E

1. $7+3 = \square$
2. $8+10 = \square$
3. $3+9 = \square$
4. $0+8 = \square$
5. $5+8 = \square$
6. $2+10 = \square$
7. $4+0 = \square$
8. $5+5 = \square$
9. $6+1 = \square$
10. $5+3 = \square$
11. $8+3 = \square$
12. $7+2 = \square$
13. $3+10 = \square$
14. $0+2 = \square$
15. $1+3 = \square$
16. $10+7 = \square$
17. $8+8 = \square$
18. $4+2 = \square$
19. $9+1 = \square$
20. $6+5 = \square$

LIST F

1. $1+0 = \square$
2. $10+0 = \square$
3. $5+8 = \square$
4. $9+9 = \square$
5. $3+1 = \square$
6. $1+7 = \square$
7. $3+6 = \square$
8. $10+10 = \square$
9. $0+5 = \square$
10. $4+8 = \square$
11. $1+10 = \square$
12. $5+6 = \square$
13. $9+6 = \square$
14. $10+2 = \square$
15. $7+4 = \square$
16. $5+10 = \square$
17. $2+8 = \square$
18. $9+3 = \square$
19. $7+6 = \square$
20. $2+5 = \square$



PUBLISHED IN NEW ZEALAND BY
THE OUTER EDGE LTD

© Copyright 2010 Barry Clayton

www.robitmccruncher.co.nz

I'm loving
this stuff!!



THE NEW NUMBER CRUNCHERS

BASIC NUMBER FACTS

LEVEL 1: ADDING-End answers only

LEVEL 1
SET 4

LIST A

1. $2+9 = \square$
2. $8+7 = \square$
3. $5+2 = \square$
4. $10+4 = \square$
5. $4+4 = \square$
6. $5+0 = \square$
7. $9+5 = \square$
8. $4+5 = \square$
9. $2+2 = \square$
10. $7+1 = \square$
11. $7+5 = \square$
12. $0+9 = \square$
13. $8+9 = \square$
14. $6+3 = \square$
15. $6+0 = \square$
16. $1+4 = \square$
17. $3+3 = \square$
18. $0+0 = \square$
19. $9+4 = \square$
20. $6+10 = \square$

LIST B

1. $10+6 = \square$
2. $1+8 = \square$
3. $9+10 = \square$
4. $6+4 = \square$
5. $7+0 = \square$
6. $5+4 = \square$
7. $6+8 = \square$
8. $2+6 = \square$
9. $4+9 = \square$
10. $2+3 = \square$
11. $3+7 = \square$
12. $1+1 = \square$
13. $9+7 = \square$
14. $3+0 = \square$
15. $10+1 = \square$
16. $3+4 = \square$
17. $6+6 = \square$
18. $4+1 = \square$
19. $9+8 = \square$
20. $0+1 = \square$

LIST C

1. $3+2 = \square$
2. $7+10 = \square$
3. $6+2 = \square$
4. $7+3 = \square$
5. $10+8 = \square$
6. $9+2 = \square$
7. $4+6 = \square$
8. $8+1 = \square$
9. $7+7 = \square$
10. $10+5 = \square$
11. $5+9 = \square$
12. $0+7 = \square$
13. $7+8 = \square$
14. $6+9 = \square$
15. $1+2 = \square$
16. $4+10 = \square$
17. $2+0 = \square$
18. $8+6 = \square$
19. $4+3 = \square$
20. $1+5 = \square$

LIST D

1. $4+7 = \square$
2. $1+9 = \square$
3. $5+7 = \square$
4. $8+2 = \square$
5. $7+9 = \square$
6. $10+9 = \square$
7. $3+8 = \square$
8. $8+4 = \square$
9. $2+4 = \square$
10. $8+5 = \square$
11. $2+1 = \square$
12. $0+4 = \square$
13. $8+0 = \square$
14. $6+9 = \square$
15. $10+3 = \square$
16. $5+1 = \square$
17. $3+5 = \square$
18. $2+7 = \square$
19. $0+3 = \square$
20. $1+6 = \square$

LIST E

1. $8+3 = \square$
2. $7+2 = \square$
3. $3+10 = \square$
4. $0+2 = \square$
5. $1+3 = \square$
6. $10+7 = \square$
7. $8+8 = \square$
8. $4+2 = \square$
9. $9+1 = \square$
10. $6+5 = \square$
11. $7+3 = \square$
12. $8+10 = \square$
13. $3+9 = \square$
14. $0+8 = \square$
15. $5+8 = \square$
16. $2+10 = \square$
17. $4+0 = \square$
18. $5+5 = \square$
19. $6+1 = \square$
20. $5+3 = \square$

LIST F

1. $1+10 = \square$
2. $5+6 = \square$
3. $9+6 = \square$
4. $10+2 = \square$
5. $7+4 = \square$
6. $5+10 = \square$
7. $2+8 = \square$
8. $9+3 = \square$
9. $7+6 = \square$
10. $2+5 = \square$
11. $1+0 = \square$
12. $10+0 = \square$
13. $5+8 = \square$
14. $9+9 = \square$
15. $3+1 = \square$
16. $1+7 = \square$
17. $3+6 = \square$
18. $10+10 = \square$
19. $0+5 = \square$
20. $4+8 = \square$



PUBLISHED IN NEW ZEALAND BY
THE OUTER EDGE LTD

© Copyright 2010 Barry Clayton

www.robitmccruncher.co.nz

I'm loving
this stuff!!



THE NEW NUMBER CRUNCHERS

BASIC NUMBER FACTS

LEVEL 1: ADDING-End answers only

LEVEL 1
SETS

LIST A

1. $2+2 = \square$
2. $7+1 = \square$
3. $5+0 = \square$
4. $9+5 = \square$
5. $4+5 = \square$
6. $9+4 = \square$
7. $6+10 = \square$
8. $1+4 = \square$
9. $3+3 = \square$
10. $0+0 = \square$
11. $6+3 = \square$
12. $6+0 = \square$
13. $7+5 = \square$
14. $0+9 = \square$
15. $8+9 = \square$
16. $10+4 = \square$
17. $4+4 = \square$
18. $2+9 = \square$
19. $8+7 = \square$
20. $5+2 = \square$

LIST B

1. $4+9 = \square$
2. $2+3 = \square$
3. $5+4 = \square$
4. $6+8 = \square$
5. $2+6 = \square$
6. $9+8 = \square$
7. $0+1 = \square$
8. $3+4 = \square$
9. $6+6 = \square$
10. $4+1 = \square$
11. $3+0 = \square$
12. $10+1 = \square$
13. $3+7 = \square$
14. $1+1 = \square$
15. $9+7 = \square$
16. $6+4 = \square$
17. $7+0 = \square$
18. $10+6 = \square$
19. $1+8 = \square$
20. $9+10 = \square$

LIST C

1. $7+7 = \square$
2. $10+5 = \square$
3. $9+2 = \square$
4. $4+6 = \square$
5. $8+1 = \square$
6. $4+3 = \square$
7. $1+5 = \square$
8. $4+10 = \square$
9. $2+0 = \square$
10. $8+6 = \square$
11. $6+9 = \square$
12. $1+2 = \square$
13. $5+9 = \square$
14. $0+7 = \square$
15. $7+8 = \square$
16. $7+3 = \square$
17. $10+8 = \square$
18. $3+2 = \square$
19. $7+10 = \square$
20. $6+2 = \square$

LIST D

1. $2+4 = \square$
2. $8+5 = \square$
3. $10+9 = \square$
4. $3+8 = \square$
5. $8+4 = \square$
6. $0+3 = \square$
7. $1+6 = \square$
8. $5+1 = \square$
9. $3+5 = \square$
10. $2+7 = \square$
11. $6+9 = \square$
12. $10+3 = \square$
13. $2+1 = \square$
14. $0+4 = \square$
15. $8+0 = \square$
16. $8+2 = \square$
17. $7+9 = \square$
18. $4+7 = \square$
19. $1+9 = \square$
20. $5+7 = \square$

LIST E

1. $9+1 = \square$
2. $6+5 = \square$
3. $10+7 = \square$
4. $8+8 = \square$
5. $4+2 = \square$
6. $6+1 = \square$
7. $5+3 = \square$
8. $2+10 = \square$
9. $4+0 = \square$
10. $5+5 = \square$
11. $0+8 = \square$
12. $5+8 = \square$
13. $7+3 = \square$
14. $8+10 = \square$
15. $3+9 = \square$
16. $0+2 = \square$
17. $1+2 = \square$
18. $8+3 = \square$
19. $7+2 = \square$
20. $3+10 = \square$

LIST F

1. $7+6 = \square$
2. $2+5 = \square$
3. $5+10 = \square$
4. $2+8 = \square$
5. $9+3 = \square$
6. $0+5 = \square$
7. $4+8 = \square$
8. $1+7 = \square$
9. $3+6 = \square$
10. $10+10 = \square$
11. $9+9 = \square$
12. $3+1 = \square$
13. $1+0 = \square$
14. $10+0 = \square$
15. $5+8 = \square$
16. $10+2 = \square$
17. $7+4 = \square$
18. $1+10 = \square$
19. $5+6 = \square$
20. $9+6 = \square$

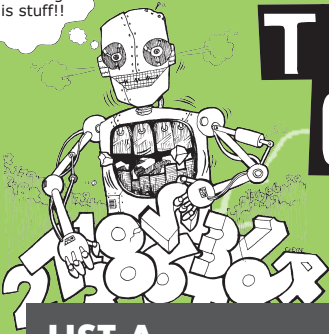


PUBLISHED IN NEW ZEALAND BY
THE OUTER EDGE LTD

© Copyright 2010 Barry Clayton

www.robitmccruncher.co.nz

I'm loving
this stuff!!



THE NEW NUMBER CRUNCHERS

BASIC NUMBER FACTS

LEVEL 1: ADDING - End answers only

LEVEL 1
SET 6

LIST A

1. $7+1 = \square$
2. $2+2 = \square$
3. $4+5 = \square$
4. $9+5 = \square$
5. $5+0 = \square$
6. $6+10 = \square$
7. $9+4 = \square$
8. $0+0 = \square$
9. $3+3 = \square$
10. $1+4 = \square$
11. $6+0 = \square$
12. $6+3 = \square$
13. $8+9 = \square$
14. $0+9 = \square$
15. $7+5 = \square$
16. $4+4 = \square$
17. $10+4 = \square$
18. $5+2 = \square$
19. $8+7 = \square$
20. $2+9 = \square$

LIST B

1. $2+3 = \square$
2. $4+9 = \square$
3. $2+6 = \square$
4. $6+8 = \square$
5. $5+4 = \square$
6. $0+1 = \square$
7. $9+8 = \square$
8. $4+1 = \square$
9. $6+6 = \square$
10. $3+4 = \square$
11. $10+1 = \square$
12. $3+0 = \square$
13. $9+7 = \square$
14. $1+1 = \square$
15. $3+7 = \square$
16. $7+0 = \square$
17. $6+4 = \square$
18. $9+10 = \square$
19. $1+8 = \square$
20. $10+6 = \square$

LIST C

1. $10+5 = \square$
2. $7+7 = \square$
3. $8+1 = \square$
4. $4+6 = \square$
5. $9+2 = \square$
6. $1+5 = \square$
7. $4+3 = \square$
8. $8+6 = \square$
9. $2+0 = \square$
10. $4+10 = \square$
11. $1+3 = \square$
12. $6+9 = \square$
13. $7+8 = \square$
14. $0+7 = \square$
15. $5+9 = \square$
16. $10+8 = \square$
17. $7+3 = \square$
18. $6+2 = \square$
19. $7+10 = \square$
20. $3+2 = \square$

LIST D

1. $8+5 = \square$
2. $2+4 = \square$
3. $8+4 = \square$
4. $3+8 = \square$
5. $10+9 = \square$
6. $1+6 = \square$
7. $0+3 = \square$
8. $2+7 = \square$
9. $3+5 = \square$
10. $5+1 = \square$
11. $10+3 = \square$
12. $6+9 = \square$
13. $8+0 = \square$
14. $0+4 = \square$
15. $2+1 = \square$
16. $7+9 = \square$
17. $8+2 = \square$
18. $5+7 = \square$
19. $1+9 = \square$
20. $4+7 = \square$

LIST E

1. $6+5 = \square$
2. $9+1 = \square$
3. $4+2 = \square$
4. $8+8 = \square$
5. $10+7 = \square$
6. $5+3 = \square$
7. $6+1 = \square$
8. $5+5 = \square$
9. $4+0 = \square$
10. $2+10 = \square$
11. $5+8 = \square$
12. $0+8 = \square$
13. $3+9 = \square$
14. $8+10 = \square$
15. $7+3 = \square$
16. $1+3 = \square$
17. $0+2 = \square$
18. $3+10 = \square$
19. $7+2 = \square$
20. $8+3 = \square$

LIST F

1. $2+5 = \square$
2. $7+6 = \square$
3. $9+3 = \square$
4. $2+8 = \square$
5. $5+10 = \square$
6. $4+8 = \square$
7. $0+5 = \square$
8. $10+10 = \square$
9. $3+6 = \square$
10. $1+7 = \square$
11. $3+1 = \square$
12. $9+9 = \square$
13. $5+8 = \square$
14. $10+0 = \square$
15. $1+0 = \square$
16. $7+4 = \square$
17. $10+2 = \square$
18. $9+6 = \square$
19. $5+6 = \square$
20. $1+10 = \square$



PUBLISHED IN NEW ZEALAND BY
THE OUTER EDGE LTD

© Copyright 2010 Barry Clayton

www.robitmccruncher.co.nz

I'm loving
this stuff!!



THE NEW NUMBER CRUNCHERS

BASIC NUMBER FACTS

LEVEL 1: ADDING-End answers only

LEVEL 1
SET 7

LIST A

1. $6+0 = \square$
2. $6+3 = \square$
3. $8+9 = \square$
4. $0+9 = \square$
5. $7+5 = \square$
6. $7+1 = \square$
7. $2+2 = \square$
8. $4+5 = \square$
9. $9+5 = \square$
10. $5+0 = \square$
11. $4+4 = \square$
12. $10+4 = \square$
13. $5+2 = \square$
14. $8+7 = \square$
15. $2+9 = \square$
16. $6+10 = \square$
17. $9+4 = \square$
18. $0+0 = \square$
19. $3+3 = \square$
20. $1+4 = \square$

LIST B

1. $10+1 = \square$
2. $3+0 = \square$
3. $9+7 = \square$
4. $1+1 = \square$
5. $3+7 = \square$
6. $2+3 = \square$
7. $4+9 = \square$
8. $2+6 = \square$
9. $6+8 = \square$
10. $5+4 = \square$
11. $7+0 = \square$
12. $6+4 = \square$
13. $9+10 = \square$
14. $1+8 = \square$
15. $10+6 = \square$
16. $0+1 = \square$
17. $9+8 = \square$
18. $4+1 = \square$
19. $6+6 = \square$
20. $3+4 = \square$

LIST C

1. $1+2 = \square$
2. $6+9 = \square$
3. $7+8 = \square$
4. $0+7 = \square$
5. $5+9 = \square$
6. $10+5 = \square$
7. $7+7 = \square$
8. $8+1 = \square$
9. $4+6 = \square$
10. $9+2 = \square$
11. $10+8 = \square$
12. $7+3 = \square$
13. $6+2 = \square$
14. $7+10 = \square$
15. $3+2 = \square$
16. $1+5 = \square$
17. $4+3 = \square$
18. $8+6 = \square$
19. $2+0 = \square$
20. $4+10 = \square$

LIST D

1. $10+3 = \square$
2. $6+9 = \square$
3. $8+0 = \square$
4. $0+4 = \square$
5. $2+1 = \square$
6. $8+5 = \square$
7. $2+4 = \square$
8. $8+4 = \square$
9. $3+8 = \square$
10. $10+9 = \square$
11. $7+9 = \square$
12. $8+2 = \square$
13. $5+7 = \square$
14. $1+9 = \square$
15. $4+7 = \square$
16. $1+6 = \square$
17. $0+3 = \square$
18. $2+7 = \square$
19. $3+5 = \square$
20. $5+1 = \square$

LIST E

1. $5+8 = \square$
2. $0+8 = \square$
3. $3+9 = \square$
4. $8+10 = \square$
5. $7+3 = \square$
6. $6+5 = \square$
7. $9+1 = \square$
8. $4+2 = \square$
9. $8+8 = \square$
10. $10+7 = \square$
11. $1+3 = \square$
12. $0+2 = \square$
13. $3+10 = \square$
14. $7+2 = \square$
15. $8+3 = \square$
16. $5+3 = \square$
17. $6+1 = \square$
18. $5+5 = \square$
19. $4+0 = \square$
20. $2+10 = \square$

LIST F

1. $3+1 = \square$
2. $9+9 = \square$
3. $5+8 = \square$
4. $10+0 = \square$
5. $1+0 = \square$
6. $2+5 = \square$
7. $7+6 = \square$
8. $9+3 = \square$
9. $2+8 = \square$
10. $5+10 = \square$
11. $7+4 = \square$
12. $10+2 = \square$
13. $9+6 = \square$
14. $5+6 = \square$
15. $1+10 = \square$
16. $4+8 = \square$
17. $0+5 = \square$
18. $10+10 = \square$
19. $3+6 = \square$
20. $1+7 = \square$

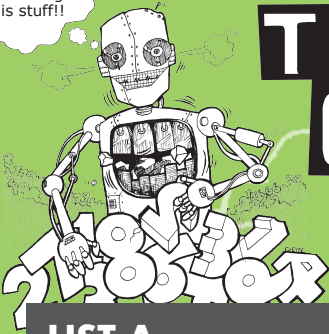


PUBLISHED IN NEW ZEALAND BY
THE OUTER EDGE LTD

© Copyright 2010 Barry Clayton

www.robitmccruncher.co.nz

I'm loving
this stuff!!



THE NEW NUMBER CRUNCHERS

BASIC NUMBER FACTS

LEVEL 1: ADDING-End answers only

LEVEL 1
SET 10

LIST A

1. $6+10 = \square$
2. $9+4 = \square$
3. $0+0 = \square$
4. $3+3 = \square$
5. $1+4 = \square$
6. $6+0 = \square$
7. $6+3 = \square$
8. $8+9 = \square$
9. $0+9 = \square$
10. $7+5 = \square$
11. $7+1 = \square$
12. $2+2 = \square$
13. $4+5 = \square$
14. $9+5 = \square$
15. $5+0 = \square$
16. $4+4 = \square$
17. $10+4 = \square$
18. $5+2 = \square$
19. $8+7 = \square$
20. $2+9 = \square$

LIST B

1. $0+1 = \square$
2. $9+8 = \square$
3. $4+1 = \square$
4. $6+6 = \square$
5. $3+4 = \square$
6. $10+1 = \square$
7. $3+0 = \square$
8. $9+7 = \square$
9. $1+1 = \square$
10. $3+7 = \square$
11. $2+3 = \square$
12. $4+9 = \square$
13. $2+6 = \square$
14. $6+8 = \square$
15. $5+4 = \square$
16. $7+0 = \square$
17. $6+4 = \square$
18. $9+10 = \square$
19. $1+8 = \square$
20. $10+6 = \square$

LIST C

1. $1+5 = \square$
2. $4+3 = \square$
3. $8+6 = \square$
4. $2+0 = \square$
5. $4+10 = \square$
6. $1+2 = \square$
7. $6+9 = \square$
8. $7+8 = \square$
9. $0+7 = \square$
10. $5+9 = \square$
11. $10+5 = \square$
12. $7+7 = \square$
13. $8+1 = \square$
14. $4+6 = \square$
15. $9+2 = \square$
16. $10+8 = \square$
17. $7+3 = \square$
18. $6+2 = \square$
19. $7+10 = \square$
20. $3+2 = \square$

LIST D

1. $1+6 = \square$
2. $0+3 = \square$
3. $2+7 = \square$
4. $3+5 = \square$
5. $5+1 = \square$
6. $10+3 = \square$
7. $6+9 = \square$
8. $8+0 = \square$
9. $0+4 = \square$
10. $2+1 = \square$
11. $8+5 = \square$
12. $2+4 = \square$
13. $8+4 = \square$
14. $3+8 = \square$
15. $10+9 = \square$
16. $7+9 = \square$
17. $8+2 = \square$
18. $5+7 = \square$
19. $1+9 = \square$
20. $4+7 = \square$

LIST E

1. $5+3 = \square$
2. $6+1 = \square$
3. $5+5 = \square$
4. $4+0 = \square$
5. $2+10 = \square$
6. $5+8 = \square$
7. $0+8 = \square$
8. $3+9 = \square$
9. $8+10 = \square$
10. $7+3 = \square$
11. $6+5 = \square$
12. $9+1 = \square$
13. $4+2 = \square$
14. $8+8 = \square$
15. $10+7 = \square$
16. $1+3 = \square$
17. $0+2 = \square$
18. $3+10 = \square$
19. $7+2 = \square$
20. $8+3 = \square$

LIST F

1. $4+8 = \square$
2. $0+5 = \square$
3. $10+10 = \square$
4. $3+6 = \square$
5. $1+7 = \square$
6. $3+1 = \square$
7. $9+9 = \square$
8. $5+8 = \square$
9. $10+0 = \square$
10. $1+0 = \square$
11. $2+5 = \square$
12. $7+6 = \square$
13. $9+3 = \square$
14. $2+8 = \square$
15. $5+10 = \square$
16. $7+4 = \square$
17. $10+2 = \square$
18. $9+6 = \square$
19. $5+6 = \square$
20. $1+10 = \square$

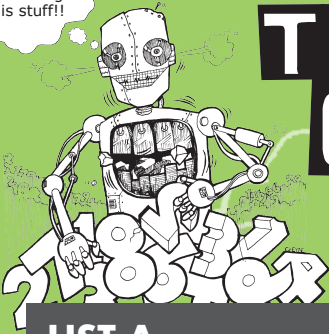


PUBLISHED IN NEW ZEALAND BY
THE OUTER EDGE LTD

© Copyright 2010 Barry Clayton

www.robitmccruncher.co.nz

I'm loving
this stuff!!



THE NEW NUMBER CRUNCHERS

BASIC NUMBER FACTS

LEVEL 1: ADDING - End answers only

LEVEL 1
SET 9

LIST A

1. $4+4 = \square$
2. $10+4 = \square$
3. $5+2 = \square$
4. $8+7 = \square$
5. $2+9 = \square$
6. $6+0 = \square$
7. $6+3 = \square$
8. $8+9 = \square$
9. $0+9 = \square$
10. $7+5 = \square$
11. $3+3 = \square$
12. $1+4 = \square$
13. $6+10 = \square$
14. $9+4 = \square$
15. $0+0 = \square$
16. $9+5 = \square$
17. $5+0 = \square$
18. $7+1 = \square$
19. $2+2 = \square$
20. $4+5 = \square$

LIST B

1. $1+8 = \square$
2. $10+6 = \square$
3. $7+0 = \square$
4. $6+4 = \square$
5. $9+10 = \square$
6. $1+1 = \square$
7. $3+7 = \square$
8. $10+1 = \square$
9. $3+0 = \square$
10. $9+7 = \square$
11. $6+6 = \square$
12. $3+4 = \square$
13. $0+1 = \square$
14. $9+8 = \square$
15. $4+1 = \square$
16. $2+3 = \square$
17. $4+9 = \square$
18. $2+6 = \square$
19. $6+8 = \square$
20. $5+4 = \square$

LIST C

1. $7+10 = \square$
2. $3+2 = \square$
3. $10+8 = \square$
4. $7+3 = \square$
5. $6+2 = \square$
6. $0+7 = \square$
7. $5+9 = \square$
8. $1+2 = \square$
9. $6+9 = \square$
10. $7+8 = \square$
11. $2+0 = \square$
12. $4+10 = \square$
13. $1+5 = \square$
14. $4+3 = \square$
15. $8+6 = \square$
16. $10+5 = \square$
17. $7+7 = \square$
18. $8+1 = \square$
19. $4+6 = \square$
20. $9+2 = \square$

LIST D

1. $1+9 = \square$
2. $4+7 = \square$
3. $7+9 = \square$
4. $8+2 = \square$
5. $5+7 = \square$
6. $0+4 = \square$
7. $2+1 = \square$
8. $10+3 = \square$
9. $6+9 = \square$
10. $8+0 = \square$
11. $3+5 = \square$
12. $5+1 = \square$
13. $1+6 = \square$
14. $0+3 = \square$
15. $2+7 = \square$
16. $3+8 = \square$
17. $10+9 = \square$
18. $8+5 = \square$
19. $2+4 = \square$
20. $8+4 = \square$

LIST E

1. $9+1 = \square$
2. $4+2 = \square$
3. $1+3 = \square$
4. $0+2 = \square$
5. $3+10 = \square$
6. $8+10 = \square$
7. $7+3 = \square$
8. $5+8 = \square$
9. $0+8 = \square$
10. $3+9 = \square$
11. $4+0 = \square$
12. $2+10 = \square$
13. $5+3 = \square$
14. $6+1 = \square$
15. $5+5 = \square$
16. $7+2 = \square$
17. $8+3 = \square$
18. $8+8 = \square$
19. $10+7 = \square$
20. $6+5 = \square$

LIST F

1. $10+0 = \square$
2. $1+0 = \square$
3. $3+1 = \square$
4. $9+9 = \square$
5. $5+8 = \square$
6. $2+5 = \square$
7. $7+6 = \square$
8. $9+3 = \square$
9. $5+6 = \square$
10. $1+10 = \square$
11. $3+6 = \square$
12. $1+7 = \square$
13. $2+8 = \square$
14. $5+10 = \square$
15. $4+8 = \square$
16. $0+5 = \square$
17. $10+10 = \square$
18. $7+4 = \square$
19. $10+2 = \square$
20. $9+6 = \square$

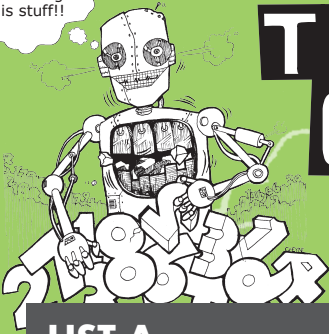


PUBLISHED IN NEW ZEALAND BY
THE OUTER EDGE LTD

© Copyright 2010 Barry Clayton

www.robitmccruncher.co.nz

I'm loving
this stuff!!



THE NEW NUMBER CRUNCHERS

BASIC NUMBER FACTS

LEVEL 1: ADDING-End answers only



LIST A

1. $7+1 = \square$
2. $2+2 = \square$
3. $4+5 = \square$
4. $9+5 = \square$
5. $5+0 = \square$
6. $4+4 = \square$
7. $10+4 = \square$
8. $5+2 = \square$
9. $8+7 = \square$
10. $2+9 = \square$
11. $6+10 = \square$
12. $9+4 = \square$
13. $0+0 = \square$
14. $3+3 = \square$
15. $1+4 = \square$
16. $6+0 = \square$
17. $6+3 = \square$
18. $8+9 = \square$
19. $0+9 = \square$
20. $7+5 = \square$

LIST B

1. $2+3 = \square$
2. $4+9 = \square$
3. $2+6 = \square$
4. $6+8 = \square$
5. $5+4 = \square$
6. $7+0 = \square$
7. $6+4 = \square$
8. $9+10 = \square$
9. $1+8 = \square$
10. $10+6 = \square$
11. $0+1 = \square$
12. $9+8 = \square$
13. $4+1 = \square$
14. $6+6 = \square$
15. $3+4 = \square$
16. $10+1 = \square$
17. $3+0 = \square$
18. $9+7 = \square$
19. $1+1 = \square$
20. $3+7 = \square$

LIST C

1. $10+5 = \square$
2. $7+7 = \square$
3. $8+1 = \square$
4. $4+6 = \square$
5. $9+2 = \square$
6. $10+8 = \square$
7. $7+3 = \square$
8. $6+2 = \square$
9. $7+10 = \square$
10. $3+2 = \square$
11. $1+5 = \square$
12. $4+3 = \square$
13. $8+6 = \square$
14. $2+0 = \square$
15. $4+10 = \square$
16. $1+2 = \square$
17. $6+9 = \square$
18. $7+8 = \square$
19. $0+7 = \square$
20. $5+9 = \square$

LIST D

1. $8+5 = \square$
2. $2+4 = \square$
3. $8+4 = \square$
4. $3+8 = \square$
5. $10+9 = \square$
6. $7+9 = \square$
7. $8+2 = \square$
8. $5+7 = \square$
9. $1+9 = \square$
10. $4+7 = \square$
11. $1+6 = \square$
12. $0+3 = \square$
13. $2+7 = \square$
14. $3+5 = \square$
15. $5+1 = \square$
16. $10+3 = \square$
17. $6+9 = \square$
18. $8+0 = \square$
19. $0+4 = \square$
20. $2+1 = \square$

LIST E

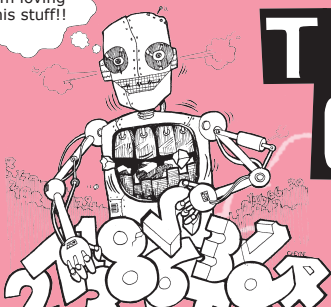
1. $6+5 = \square$
2. $9+1 = \square$
3. $4+2 = \square$
4. $8+8 = \square$
5. $10+7 = \square$
6. $1+3 = \square$
7. $0+2 = \square$
8. $3+10 = \square$
9. $7+2 = \square$
10. $8+3 = \square$
11. $5+3 = \square$
12. $6+1 = \square$
13. $5+5 = \square$
14. $4+0 = \square$
15. $2+10 = \square$
16. $5+8 = \square$
17. $0+8 = \square$
18. $3+9 = \square$
19. $8+10 = \square$
20. $7+3 = \square$

LIST F

1. $2+5 = \square$
2. $7+6 = \square$
3. $9+3 = \square$
4. $2+8 = \square$
5. $5+10 = \square$
6. $7+4 = \square$
7. $10+2 = \square$
8. $9+6 = \square$
9. $5+6 = \square$
10. $1+10 = \square$
11. $4+8 = \square$
12. $0+5 = \square$
13. $10+10 = \square$
14. $3+6 = \square$
15. $1+7 = \square$
16. $3+1 = \square$
17. $9+9 = \square$
18. $5+8 = \square$
19. $10+0 = \square$
20. $1+0 = \square$



I'm loving
this stuff!!



THE NEW NUMBER CRUNCHERS

BASIC NUMBER FACTS
ANSWERS FOR ALL SETS AT THIS LEVEL

LEVEL 1
ANSWERS

SET 1						
LIST						
	A	B	C	D	E	F
1	11	16	5	11	11	11
2	15	9	17	10	9	11
3	7	19	8	12	13	15
4	14	10	10	10	2	12
5	8	7	18	16	4	11
6	12	10	14	3	10	1
7	9	2	7	4	18	10
8	17	16	15	8	12	13
9	9	3	15	15	8	18
10	6	11	3	13	13	4
11	5	7	14	6	12	8
12	6	12	2	8	4	9
13	0	5	14	9	10	20
14	13	17	7	3	7	5
15	16	1	6	7	8	12
16	5	9	11	19	17	15
17	14	14	10	11	16	10
18	9	8	9	12	6	12
19	4	13	14	6	10	13
20	8	5	15	13	11	7

SET 2						
LIST						
	A	B	C	D	E	F
1	5	7	14	6	12	8
2	6	12	2	8	4	9
3	0	5	14	9	10	20
4	13	17	7	3	7	5
5	16	1	6	7	8	12
6	11	16	5	11	11	11
7	15	9	17	10	9	11
8	7	19	8	12	13	15
9	14	10	10	10	2	12
10	8	7	18	16	4	11
11	5	9	11	19	17	15
12	14	14	10	11	16	10
13	9	8	9	12	6	12
14	4	13	14	6	10	13
15	8	5	15	13	11	7
16	12	10	14	3	10	1
17	9	2	7	4	18	10
18	17	16	15	8	12	13
19	9	3	15	15	8	18
20	6	11	3	13	13	4

SET 3						
LIST						
	A	B	C	D	E	F
1	12	10	14	3	10	1
2	9	2	7	4	18	10
3	17	16	15	8	12	13
4	9	3	15	15	8	18
5	6	11	3	13	13	4
6	5	7	14	6	12	8
7	6	12	2	8	4	9
8	0	5	14	9	10	20
9	13	17	7	3	7	5
10	16	1	6	7	8	12
11	11	16	5	11	11	11
12	15	9	17	10	9	11
13	7	19	8	12	13	15
14	14	10	10	10	2	12
15	8	7	18	16	4	11
16	5	9	11	19	17	15
17	14	14	10	11	16	10
18	9	8	9	12	6	12
19	4	13	14	6	10	13
20	8	5	15	13	11	7

SET 4						
LIST						
	A	B	C	D	E	F
1	11	16	5	11	11	11
2	15	9	17	10	9	11
3	7	19	8	12	13	15
4	14	10	10	10	2	12
5	8	7	18	16	4	11
6	5	9	11	19	17	15
7	14	14	10	11	16	10
8	9	8	9	12	6	12
9	4	13	14	6	10	13
10	8	5	15	13	11	7
11	12	10	14	3	10	1
12	9	2	7	4	18	10
13	17	16	15	8	12	13
14	9	3	15	15	8	18
15	6	11	3	13	13	4
16	5	7	14	6	12	8
17	6	12	2	8	4	9
18	0	5	14	9	10	20
19	13	17	7	3	7	5
20	16	1	6	7	8	12

SET 5						
LIST						
	A	B	C	D	E	F
1	4	13	14	6	10	13
2	8	5	15	13	11	7
3	5	9	11	19	17	15
4	14	14	10	11	16	10
5	9	8	9	12	6	12
6	13	17	7	3	7	5
7	16	1	6	7	8	12
8	5	7	14	6	12	8
9	6	12	2	8	4	9
10	0	5	14	9	10	20
11	9	3	15	15	8	18
12	6	11	3	13	13	4
13	12	10	14	3	10	1
14	9	2	7	4	18	10
15	17	16	15	8	12	13
16	14	10	10	10	2	12
17	8	7	18	16	3	11
18	11	16	5	11	11	11
19	15	9	17	10	9	11
20	7	19	8	12	13	15

SET 6						
LIST						
	A	B	C	D	E	F
1	8	5	15	13	11	7
2	4	13	14	6	10	13
3	9	8	9	12	6	12
4	14	14	10	11	16	10
5	5	9	11	19	17	15
6	16	1	6	7	8	12
7	13	17	7	3	7	5
8	0	5	14	9	10	20
9	6	12	2	8	4	9
10	5	7	14	6	12	8
11	6	11	4	13	13	4
12	9	3	15	15	8	18
13	17	16	15	8	12	13
14	9	2	7	4	18	10
15	12	10	14	3	10	1
16	8	7	18	16	4	11
17	14	10	10	10	2	12
18	7	19	8	12	13	15
19	15	9	17	10	9	11
20	11	16	5	11	11	11

SET 7						
LIST						
	A	B	C	D	E	F
1	6	11	3	13	13	4
2	9	3	15	15	8	18
3	12	16	15	8	12	13
4	9	2	7	4	18	10
5	12	10	14	3	10	1
6	8	5	15	13	11	7
7	4	13	14	6	10	13
8	9	8	9	12	6	12
9	14	14	10	11	16	10
10	5	9	11	19	17	15
11	8	7	18	16	4	11
12	14	10	10	10	2	12
13	7	19	8	12	13	15
14	15	9	17	10	9	11
15	11	16	5	11	11	11
16	16	1	6	7	8	12
17	13	17	7	3	7	5
18	0	5	14	9	10	20
19	6	12	2	8	4	9
20	5	7	14	6	12	8

SET 8						
LIST						
	A	B	C	D	E	F
1	16	1	6	7	8	12
2	13	17	7	3	7	5
3	0	5	14	9	10	20
4	6	12	2	8	4	9
5	5	7	14	6	12	8
6	6	11	3	13	13	4
7	9	3	15	15	8	18
8	17	16	15	8	12	13
9	9	2	7	4	18	10
10	12	10	14	3	10	1
11	8	5	15	13	11	7
12	4	13	14	6	10	13
13	9	8	9	12	6	12
14	14	14	10	11	16	10
15	5	9	11	19	17	15
16	8	7	18	16	4	11
17	14	10	10	10	2	12
18	7	19	8	12	13	15
19	15	9	17	10	9	11
20	11	16	5	11	11	11

SET 9						
LIST						
	A	B	C	D	E	F
1	8	9	17	10	10	10
2	14	16	5	11	6	1
3	7	7	18	16	4	4
4	15	10	10	10	2	18
5	11	19	8	12	13	13
6	6	2	7	4	18	7
7	9	10	14	3	10	13
8	17	11	3	13	13	12
9	9	3	15	15	8	11
10	12	16	15	8	12	11
11	6	12	2	8	4	9
12	5	7	14	6	12	8
13	16	1	6	7	8	10
14	13	17	7	3	7	15
15	0	5	14	9	10	12
16	14	5	15	11	9	5
17	5	13	14	19	11	20
18	8	8	9	13	16	11
19	4	14	10	6	17	12
20	9	9	11	12	11	15

SET 10						
LIST						
	A	B	C	D	E	F
1	8	5	15	13	11	7
2	4	13	14	6	10	13
3	9	8	9	12	6	12
4	14	14	10	11	16	10
5	5	9	11	19	17	15
6	8	7	18	16	4	11
7	14	10	10	10	2	12
8	7	19	8	12	13	15
9	15	9	17	10	9	11
10	11	16	5	11	11	11
11	16	1	6	7	8	12
12	13	17	7	3	7	5
13	0	5	14	9	10	20
14	6	12	2	8	4	9
15	5	7	14	6	12	